



415 MT. NEBO ROAD, PITTSBURGH, PA 15237 | 724.337.1685 | WWW.TEXOLVE.COM



PETERSEN EVENTS CENTER

HEINZ FIELD

“Solving technology issues for audio & video professionals”

CORPORATE & STADIUM PROJECT PORTFOLIO



CONSOL ENERGY CENTER



PNC PARK



ADAMSON STADIUM

TABLE OF CONTENTS



I. COMPANY INFORMATION

- A. Company Profile
- B. Client List

II. TEXOLVE DIGITAL SERVICES

- A. Maintenance Services
- B. Consulting & Strategic Planning
- C. Design & Project Management
- D. Integration Services
- E. Facility Technology Management
- F. Product Sales & Distribution

III. STADIUM PROJECTS

- A. Heinz Field
- B. PNC Park
- C. Petersen Events Center
- D. Consol Energy Center
- E. Adamson Stadium
- F. California University Convocation Center

COMPANY PROFILE & KEY PERSONNEL

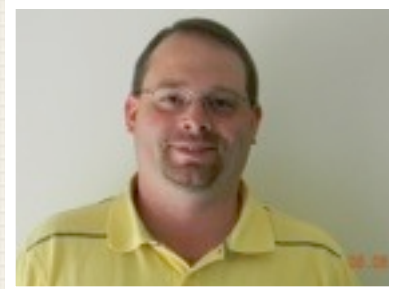
Texolve Digital, Inc. is an audio/video systems integration company, providing technical support for the broadcast, industrial, commercial, educational and corporate markets. Specializing in repair & maintenance, facility engineering, and design & integration, we provide unique services for each client based on the goal of the project. We design custom workflows, install and support systems and create solutions tailored to client needs through the use of emerging technology.

415 MT. NEBO ROAD
PITTSBURGH, PA 15237
PHONE (724) 337-1685
FAX (724) 337-9485
WWW.TEXOLVE.COM

Texolve Digital, Inc. operates from offices in close proximity to the Pittsburgh International Airport and 10 miles north of downtown Pittsburgh, Pennsylvania. Our corporate campus includes complimentary businesses including: Near Field Communications, Graham Audio and Viewpoint Television Production Services. Our office includes warehouse space, truck bays, and a loading dock. We use state of the art test equipment and service tools to assist in the diagnosis and repair of individual hardware.



MICHAEL GIANUTSOS,
PRESIDENT



SEAN WILLIAMS,
DESIGN & INTEGRATION



ROBERT G. PENNINGTON,
BUSINESS DEVELOPMENT MGR.



DAVE COOPEY,
SALES & DESIGN CONSULTANT

COMPANY PROFILE & KEY PERSONNEL

MIKE GIANUTSOS, PRESIDENT

Mike founded Texolve in 1997 and has over 30 years of experience in television systems engineering. He served as a systems design engineer with an international systems integrator, director of engineering for a mobile broadcast company, maintenance engineer for numerous post-production facilities, and remote engineer for special event sports and news broadcasts.

SEAN WILLIAMS, DESIGN & INTEGRATION

Sean brings over 15 years of experience in television systems engineering. Having served as a remote production truck engineer and satellite truck engineer, Sean has an extensive knowledge of system design. He was the first Engineer-In Charge at PNC Park, Heinz Field and the Petersen Events Center. Sean focuses on design and integration, preparing all CAD drawings for Texolve projects and leads the installation team.

ROBERT G. PENNINGTON, BUSINESS DEVELOPMENT MANAGER

Bob brings over 20 years of experience in broadcast television, AV production, systems integration and product development. He has worked for resellers, systems integrators and industry leading manufacturers supporting production and post-production products and technologies. Bob's understanding of the operations and engineering of complex systems allow him to develop unique solutions.

DAVE COOPEY, SALES & DESIGN CONSULTANT

Dave has been deeply involved in sophisticated broadcasting, media, IPTV, AV, communications, structured cabling and IT systems projects for over 15 years with a track record of success in project management, installation management, technology consulting and business development. In 2006 Dave passed the Project Management Institute's PMP exam and holds a certification as a Project Management Professional. Dave's professional background has been a vital addition to our product sales team.

ROBERT SOMMERKAMP, ENGINEERING & INTEGRATION

With a background in IT training and system commissioning, Rob serves as our Engineer-In-Charge at PNC Park, the Petersen Events Center and Adamson Stadium. With his vast experience with installation projects, Rob also carries out our on-site installation projects.

DAVID CRUMLEY, ENGINEERING & INTEGRATION

David began his work at Texolve as the Engineer-In-Charge at PNC Park and the Petersen Events Center. He now manages the maintenance and repair projects for our clients.

NORA DUNCAN, OFFICE MANGER

Nora manages the business operations, assists with current projects and new business development. She has prior experience in the industry, having worked as the producer for the University of Pittsburgh basketball program at the Petersen Events Center and football at Heinz Field.



DAVID CRUMLEY,
ENGINEERING & INTEGRATION



ROBERT SOMMERKAMP,
ENGINEERING & INTEGRATION

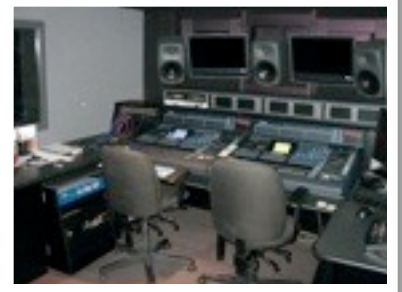


NORA DUNCAN,
OFFICE MANGER

CLIENT PORTFOLIO

BROADCAST

- City of Pittsburgh Cable Bureau
- Municipality of Monroeville TV-15
- PCTV
- WBGN-TV
- WJAC-TV
- WQED-TV
- WPXI-TV



WQED-TV

CORPORATE

- Catholic Diocese of Pittsburgh
- Charleston Area Medical Center
- Heinz Hall
- Mine Safety Appliances
- Northway Christian Church
- Development Dimensions International
- PNC Financial Services



ST. PAUL'S CATHEDRAL

EDUCATION

- California University of Pennsylvania
- Carnegie Mellon University
- Robert Morris University
- School District of Pittsburgh
- University of Pittsburgh
- Waynesburg University
- West Liberty University
- West Virginia University



SCHOOL DISTRICT OF
PITTSBURGH

POST PRODUCTION

- TJL Productions
- Mind Over Media
- New Perspective
- Phenomenon
- The Videohouse



PHENOMENON

SPORTS & ENTERTAINMENT

- California University Football
- Pittsburgh Panthers
- Pittsburgh Penguins
- Pittsburgh Pirates
- Pittsburgh Steelers



PETERSEN EVENTS CENTER

TEXOLVE DIGITAL SERVICES

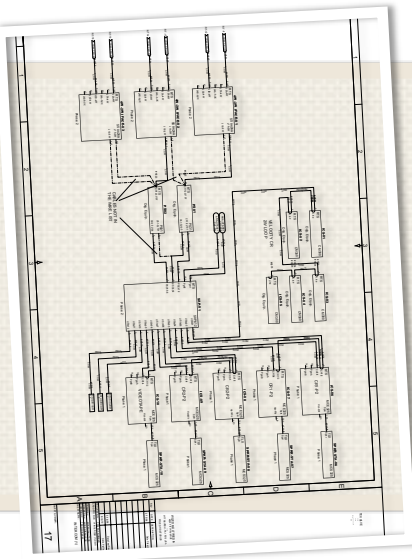


MAINTENANCE SERVICES

Texolve Digital was formed with its foundation rooted in equipment repair & maintenance. Using state of the art test equipment and service tools, we are able to keep your equipment running at its peak performance and service repairs as needed.

CONSULTING & STRATEGIC PLANNING

When you're planning for an upcoming project, call Texolve Digital. We provide professional guidance and advice, taking current equipment and emerging technology into consideration, providing a unique solution for every client.



DESIGN & PROJECT MANAGEMENT

We're equipped to manage the project from start to finish. We'll start by putting the concept on paper with a detailed CAD drawing, showing all components in the system and how they interface together.

TEXOLVE DIGITAL SERVICES

INTEGRATION SERVICES

Next is Texolve Digital's integration services, taking it from the design on paper to the equipment installation and system integration. And when that's finished, we can assist in training the operators on using the newly installed tools.



FACILITY TECHNOLOGY MANAGEMENT

We are the go-to company for on-site, in-game facility engineering services. Our long term contracts with professional and collegiate sports teams has been a key part to our continuing services in their long-term endeavors.

PRODUCT SALES & DISTRIBUTION

As an exclusive equipment provider, we can secure the lowest price for the products you need. We provide equipment needed for a system that we design AND equipment needed for other projects.



PRODUCT LINE

- Adder
- Aerva
- Aja
- Anton Bauer
- Apantac
- APC AV
- Atempo
- Atomos
- Autoscript
- AVID
- Avocent
- Behringer
- Black Diamond Video
- Bluefish444
- Broadata
- Cache-a
- CAD
- Camera Dynamics
- Canon
- CatDV
- Cetacea Sound
- Chauvet
- Christie
- ChyTV
- Cobalt
- Compix
- Coolsign
- Da-Lite
- Dell
- Display Werks
- Diversitrack
- DNF Controls
- Draper
- Echo
- EditShare
- ELMO
- Ensemble Designs
- Evertz
- FFV
- FSR
- Furman
- Gefen
- Haivision
- HP
- IDX System Technology
- IHSE
- IK Multimedia
- Ikegami
- Intelix
- JVC
- Knox Video
- Kramer
- LG
- Liberty Wire & Cable
- Luidia
- MagicBox
- Magnavox
- Marshall Electronics
- Martin
- Matrox
- MedXChange
- Microsoft
- Miller
- Minicom
- Miranda
- Motorola Solutions
- NewTek
- Niles
- NVIDIA
- Optoma
- Panasonic
- Peerless
- Philips
- Phoenix
- Picture Phone
- Pioneer
- Premier Mounts
- QSC
- Recordex
- Samsung
- Sansonic
- Seagate
- SHARP
- Solid State Logic
- Sonnox
- SONY
- Sound Craft Systems
- Stirling
- Studiocode
- Switchcraft
- TASCAM
- TecNec
- Telemetrics
- Telestream
- TOA
- TOSHIBA
- Tripp Lite
- TruMedia
- TV One
- Ultrason
- Utah Scientific
- VASST
- Video Furniture International
- Videssence
- ViewCast
- Visionary Solutions
- X20 Media
- XVD
- ZV



Visit www.texolve.com for the most up to date listing of featured products.

HEINZ FIELD

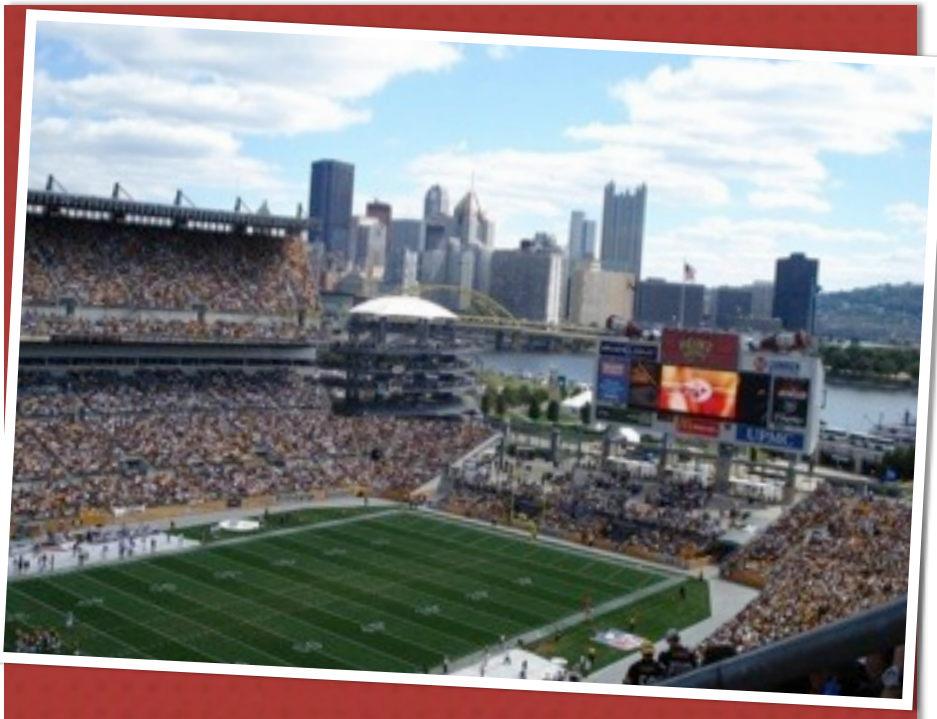
HOME OF THE WORLD CHAMPION
PITTSBURGH STEELERS & NATIONAL
CHAMPION PITTSBURGH PANTHERS

Texolve's relationship with the Steelers dates prior to the opening of Heinz Field in 2001. Since that time, we have joined together to complete many in-house projects and upgrades in addition to the game-day services that are provided. We have witnessed and been fortunate to be a part of many record-breaking and memorable moments in this stunning facility on Pittsburgh's North Shore.

- **2001 to present:** Yearly Engineer-In-Charge contract for all home Steelers and Panthers games & other facility events
- **2004:** Complete overhaul of 260-foot of outdoor fascia

LED
advertising system (ANC/
Lighthouse)

- **2008:** Addition of 3 AVID editing systems and a 32 terabyte Editshare shared storage system
- **2010:** Control room upgrade with two additional Avid editing systems, new portable Telestrater system that can be used with touch displays for Coach and Commentator programming

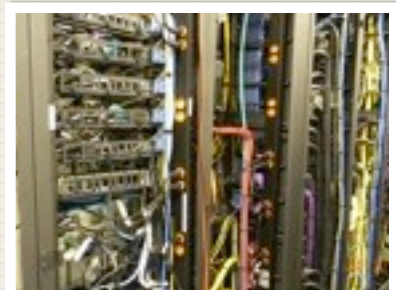
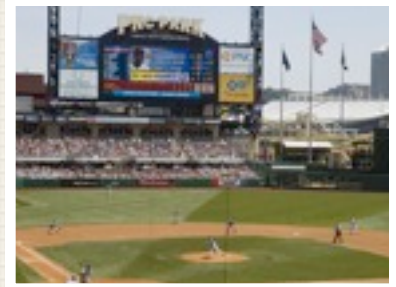


PNC PARK

HOME OF THE WORLD
CHAMPION PITTSBURGH
PIRATES

Texolve can almost call PNC Park, one of the best ballparks in the country, its second home. Like the other professional and sporting venues in the city of Pittsburgh, Texolve has been a vital part of the control room growth and development since its opening in 2001.

- **2001 to present:** Yearly Engineer-In-Charge contract for all home games & other facility events
- **2001:** Consulting on behalf of client with architect and agents as it related to design, construction and integration of the video replay system including Jumbotron display and associated control room systems
- **2006:** Design and installation of turnkey AVID editing system for broadcast productions
- **2008:** Design of Final Cut Pro editing system with custom storage for in-game entertainment use
- **2010-11:** Created and presented an HD upgrade proposal in preparation of their move in that direction.



PETERSEN EVENTS CENTER & PETERSEN SPORTS COMPLEX

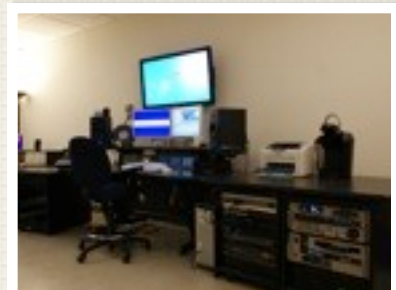
HOME OF THE NATIONALLY RANKED UNIVERSITY OF PITTSBURGH PANTHERS

Texolve has been behind the scenes on the collegiate level since the Petersen Events Center was built in 2002. In addition to enjoying the success of the athletic programs, Texolve has also been in the facility for yearly commencement and other University exercises and other outside events hosted within the building.

- **2002 to present:** Yearly Engineer-In-Charge agreement for all home Pitt Basketball games & other facility events
- **2004:** Design & installation of turnkey 844xi and FCP non-linear editing and compositing systems
- **2006:** Petersen Events Center control room redesign/

integration including flypack system proposal

- **2009:** Jumbotron control room digital upgrade including new production and routing switchers
- **2010:** PantherVision editing station upgrade
- **2011:** Upgrading the audio & video technical facilities at the Petersen Events Center, providing HD video signals
- **2011:** Establishing HD audio & video technical facilities for event coverage at the Petersen Sports Complex and other venues which extend beyond the PEC



CONSOL ENERGY CENTER

HOME OF THE STANLEY CUP
CHAMPION PITTSBURGH
PENGUINS

The bar has been set high in this state-of-the-art facility in downtown Pittsburgh. It is sure to be the talk of the town for years to come and Texolve served as a consultant to the Pittsburgh Penguins staff acting as the Technical Oversight Group. Texolve contributed to the project planning, management and installation of a second Editshare system.

- **2006:** Designed and rebuilt the control room in the Civic Arena
- **2008:** Installation of an Editshare media storage system allowing asset

sharing among over 12 users

- **2010:** Signed Engineer-In-Charge contract for all home Pittsburgh Penguins games
- **2011:** Signed Engineer-In-Charge contract for Pittsburgh Power home games



ADAMSON STADIUM

HOME OF THE CALIFORNIA
UNIVERSITY OF PA
VULCANS

With an overhaul to Adamson Stadium at California University (PA) in 2010, Texolve was asked to join the football program on game days, serving as their new Engineer-In Charge for the season.

- **2010:** Following an overhaul to Adamson Stadium in 2010, Texolve was awarded EIC contract for the season
- **2010:** Completed a rewiring project Adamson Stadium



CALIFORNIA UNIVERSITY OF PENNSYLVANIA CONVOCAATION CENTER

Set to open in the fall of 2011, the brand new Convocation Center will house a 6,000-seat arena that will host California University of Pennsylvania basketball, volleyball and other university events. The Convocation Center will also offer "Smart Classrooms" & "high-tech audio and video, wireless internet access, webcams, videoconferencing equipment and interactive response systems."

- **2011:** Awarded a consulting agreement with California University to provide oversight on the technology deployment at the new Convocation Center.

- Interfacing with the architect, general contractor and associated prime contractors
- **2011-12:** Awarded contract to provide all audio & video equipment and provide installation services & oversight to complete and service the new facility.



TEXOLVE DIGITAL, INC.

415 MT. NEBO ROAD, PITTSBURGH, PA 15237

PHONE (724) 337-1685 WWW.TEXOLVE.COM FAX (724) 337-9485